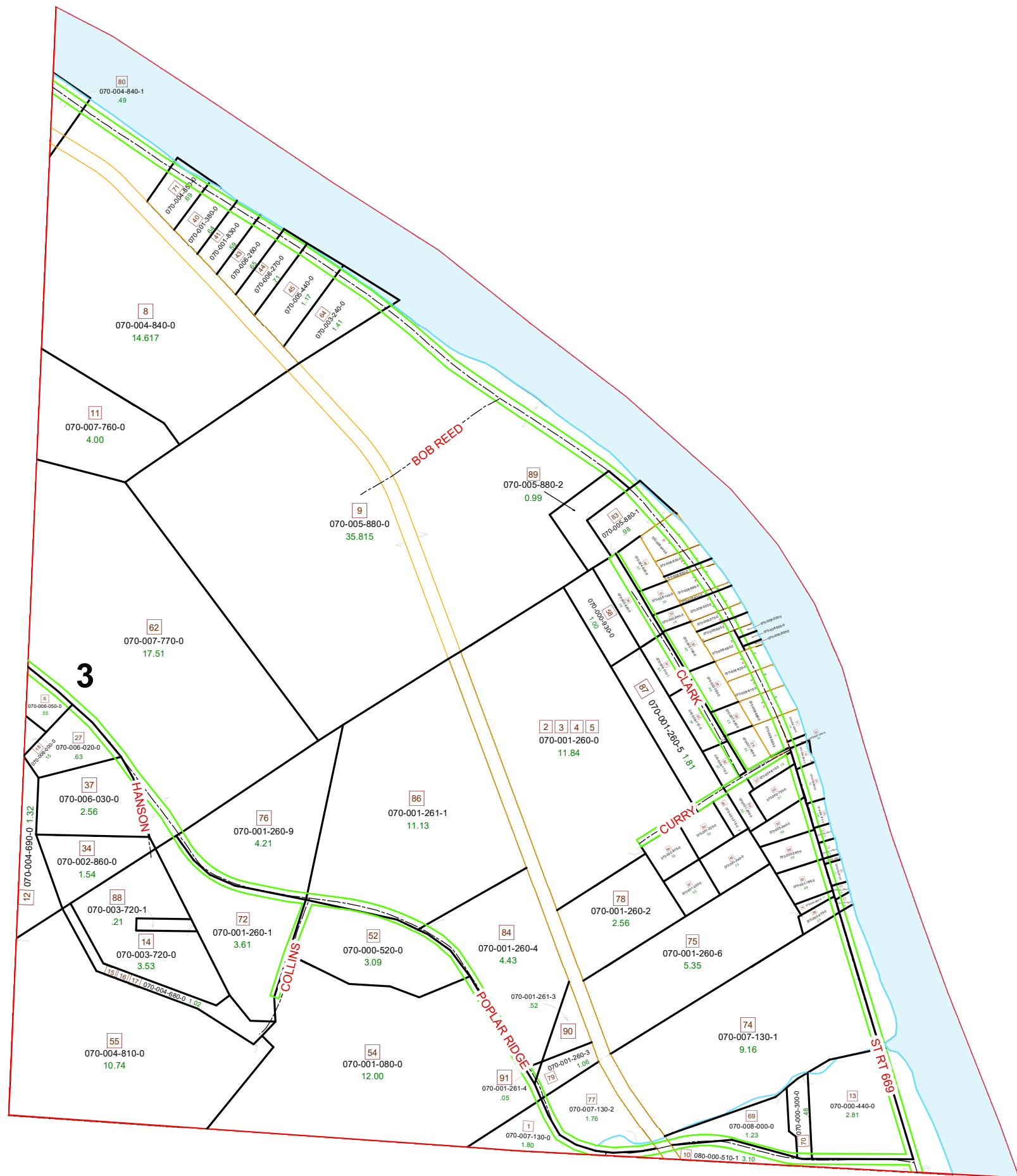
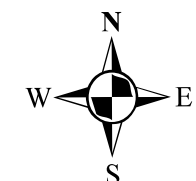


# MALTA TOWNSHIP SECTION 3 R-12 TWP-10 MORGAN COUNTY, OH



PIN	VOL	PAG	Owner	LegalDescr	Acres
070-001-220-0	OR209	1518	1ST MORGAN PROPERTIES LLC	R12 T10 S03 SD 63	0.52
070-004-840-1	OR231	1758	ADAMS LORENA M	R12 T10 S03 SD 80	0.499
070-000-230-0	OR50	626	BAKER RANDY	R12 T10 S03 SD 22	0.1
070-000-240-0	OR51	41	BAKER RANDY L	R12 T10 S03 SD 68	0.5
070-000-370-0	D.V 156	205	BARRETT JOHN W & MARY JANE	R12 T10 S03 SD 38	0.23
070-000-380-0	D.V 156	205	BARRETT JOHN W & MARY JANE	R12 T10 S03 SD 46	0.11
070-001-265-0	OR54	394	BARRETT MARY J	R12 T10 S03 SD 73	0.073
070-001-180-0	OR54	394	BARRETT MARY J	R12 T10 S03 SD 49	0.468
070-000-300-0	OR203	1355	BEST THEODORE P	R12 T10 S03 SD 70	0.48
070-000-440-0	OR203	1355	BEST THEODORE P	R12 T10 S03 SD 13	2.81
070-001-250-0	OR199	213	BURFIELD ALICE F	R12 T10 S03 SD 67	0.52
070-006-110-2	OR204	725	CARR RAYMOND	R12 T10 S03 SD 82	0.316
070-006-110-0	OR192	439	CARR RAYMOND	R12 T10 S03 SD 61	0.547
070-001-260-5	OR202	1993	CARR RAYMOND O	R12 T10 S03 SD 87	1.817
070-006-110-1	OR110	568	CARR RAYMOND O C/O PEOPLES BANK	R12 T10 S03 SD 81	0.477
070-001-980-0	OR85	651	CAULKINS ROBIN E	R12 T10 S03 SD 42	0.03
070-001-990-0	OR85	651	CAULKINS ROBIN E	R12 T10 S03 SD 23	0.108
070-001-210-0	OR233	5243	CRAMER KEVIN JOHN & NICOLE M SURV IVORSHIP	R12 T10 S03 SD 60 SUR	0.213
070-001-200-0	OR233	5243	CRAMER KEVIN JOHN & NICOLE M SURV IVORSHIP	R12 T10 S03 SD 59 SUR	0.3
070-001-240-0	OR135	563	CUNNINGHAM ROBERT L & MARY H	R12 T10 S03 SD 65 SUR	0.73
070-001-080-0	OR232	957	DEARINGER ZACKARY D	R12 T10 S03 SD 54 SUR	12
070-002-190-0	OR23	107	GAVIN MARLYN F	R12 T10 S03 SD 32	0.43
070-007-130-0	OR50	722	GREUEY JUDY K	R12 T10 S03 SD 1	1.805
070-001-260-0	OR224	1013	GREUEY WILLIAM J & BARBARA J TRUSTEES	R12 T10 S03 SD 2-3-4-5	11.847
070-004-600-0	OR121	570	HAIRSTON WILLIAM	R12 T10 S03 SD 19	0.11
070-002-860-0	OR223	1065	HANSON DAVID G TOD-ROBERT W & RANDY C HANSO	R12 T10 S03 SD 34	1.54
070-000-870-0	OR180	488	HARDWICK SHERYL L	R12 T10 S03 SD 31	0.11
070-004-610-0	OR208	3410	HITE BONNIE J	R12 T10 S03 SD 57	0.193
070-003-240-0	D.V 164	196	HOPKINS STEVEN D & BONNITA	R12 T10 S03 SD 64	1.41
070-003-720-1	OR205	1929	JANES CHAD W	R12 T10 S03 SD 88	0.215
070-003-720-0	OR205	1929	JANES CHAD W	R12 T10 S03 SD 14	3.532
070-001-260-4	OR209	2738	JJM MORGAN LTD	R12 T10 S03 SD 84	4.382
070-001-261-3	OR217	2978	JJM MORGAN LTD	R12 T10 S03 SD 90	0.523
070-005-880-0	OR233	145	KIRK STEPHEN & STACI	R12 T10 S03 SD 9 SUR	35.815
070-003-730-0	D.V 139	437	KLASS JOHN J & MARY	R12 T10 S03 SD 47	0.03
070-008-140-0	OR215	945	KNAUB PAUL P JR & JENICE LOUISE TOD-MATTHEW DE	R12 T10 S03 SD 30 SUR	0.3
070-000-840-0	OR154	75	LEWIS JAMES A & LINDA STEVE FREEMAN, JASON LE	R12 T10 S03 SD 33	0.18
070-007-430-0	OR232	4601	LORTZ ROBIN EILEEN	R12 T10 S03 SD 28	0.23
070-001-261-1	OR142	802	MCCREARY JONI J TRUSTEE OF TRUST	R12 T10 S03 SD 86	11.135
070-004-640-0	OR186	693	MCDONALD JOIER R & JEAN E	R12 T10 S03 SD 48 SUR	0.37
070-001-830-0	OR209	2971	MITCHELL WAYNE E	R12 T10 S03 SD 41	0.59
070-001-380-0	OR219	1317	NORTH EIGHTH RENTALS INC	R12 T10 S03 SD 40	0.64
070-004-850-0	OR212	2548	NORTH EIGHTH RENTALS INC	R12 T10 S03 SD 71	0.696
070-005-440-0	OR207	97	OLIVER CLIFFORD M TRUSTEE	R12 T10 S03 SD 45	1.17



**Boundaries**

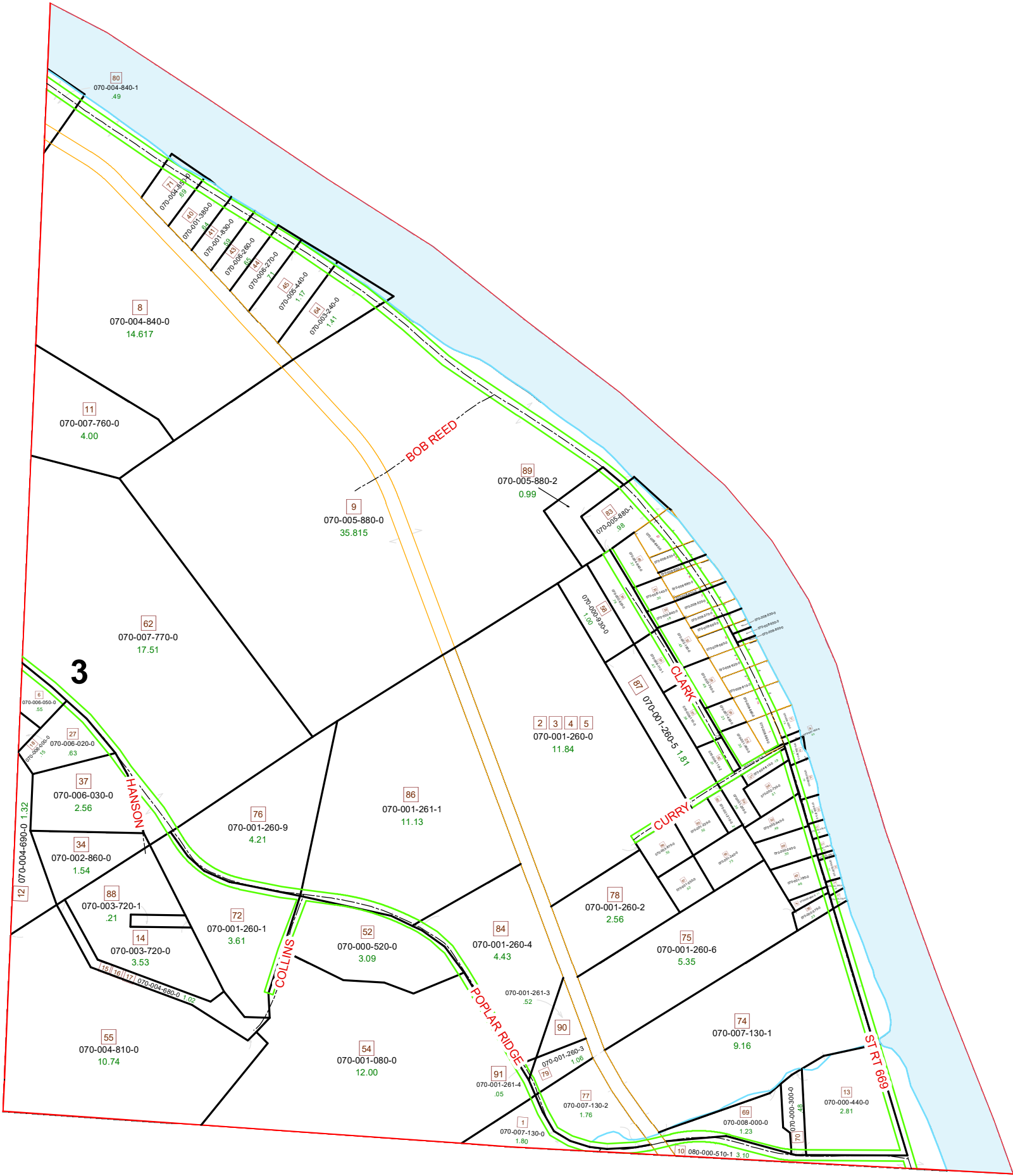
- Hidden
- Hydro
- Roads
- County
- Lot
- Parcel
- ROW
- Section
- Township
- Parcels



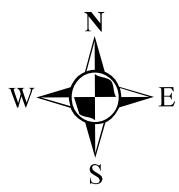
Disclaimer: The information that these maps contains is for reference purposes only. Please bring any erros to the attention of the Engineer's Office staff.  
Thank you

Source: Morgan County Engineer's Office  
Author: Marcia Wolfe  
Date: 6/17/2020

# MALTA TOWNSHIP SECTION 3 R-12 TWP-10 MORGAN COUNTY, OH



PIN	VOL	PAG	Owner	LegalDescr	Acres
070-003-670-0	OR104	438	POPE GEORGE A	R12 T10 S03 SD 66	0.52
070-001-260-9	OR200	719	POPLAR RIDGE CONSTRUCTION LTD	R12 T10 S03 SD 76	4.214
070-005-880-1	OR67	389	REED MICHAEL C & KIMBERLY S	R12 T10 S03 SD 83 SUR	0.988
070-005-880-2	OR67	389	REED MICHAEL C & KIMBERLY S	R12 T10 S03 SD 89 SUR	0.99
070-005-940-0	OR209	1048	REX ANDREW G & ANDREA RUTH	R12 T10 S03 SD 50	0.49
070-006-000-0	D.V	190	191 RILEY JACK E & BARBARA L	R12 T10 S08 SD 18	0.15
070-006-020-0	D.V	190	191 RILEY JACK E & BARBARA L	R12 T10 S03 SD 27	0.63
070-006-050-0	D.V	190	191 RILEY JACK E & BARBARA LEE	R12 T10 S03 SD 6 SUR	0.55
070-006-030-0	D.V	162	49 RILEY JACK R & APRIL L	R12 T10 S03 SD 37	2.56
070-006-270-0	D.V	130	599 ROBERTS PATRICK M	R12 T10 S03 SD 44	0.712
070-006-260-0	OR229	442	ROBERTS PATRICK M & JULIA	R12 T10 S03 SD 43 SUR	0.656
070-003-760-0	OR234	3243	SALTICK OUTFITTERS, LLC	R12 T10 S03 SD 26	0.49
070-001-760-0	OR234	1570	SHERBURN DON	R12 T10 S03 SD 29 SUR	0.308
070-001-750-0	OR234	1570	SHERBURN DON	R12 T10 S03 SD 24 SUR	0.039
070-001-260-1	OR223	2560	SMITH DANIEL C & AMY S	R12 T10 S03 SD 72 SUR	3.611
070-004-680-0	OR1	153	SPEARS TERRY W & MARY L	R12 T10 S03 SD 15-16-	1.02
070-004-690-0	OR1	553	SPEARS TERRY W & MARY L	R12 T10 S03 SD 12	1.32
070-004-810-0	OR1	153	SPEARS TERRY W & MARY LOU	R12 T10 S03 SD 55	10.74
070-002-730-0	OR219	1802	TRIMBLE JANICE G	R12 T10 S03 SD 56	0.518
070-001-260-6	D.V	197	101 VILLAGE OF MALTA	R12 T10 S03 SD 75	5.357
070-007-130-1			VILLAGE OF MALTA	R12 T10 S03 SD 74	9.164
070-001-261-4	OR217	2981	VILLAGE OF MALTA	R12 T10 S03 SD 91	0.052
080-000-510-2	OR169	148	VILLAGE OF MALTA & VILLAGE OF MCCONNELSVILLE	R12 T10 S10 SD 90B	14.83
080-000-510-1	OR169	148	VILLAGE OF MALTA & VILLAGE OF MCCONNELSVILLE	R12 T10 S03 SD 10 REC	3.1
070-007-130-2	OR3	505	VILLAGE OF MALTA OHIO	R12 T10 S03 SD 77	1.766
070-001-260-2	D.V	197	104 VILLAGE OF MALTA OHIO	R12 T10 S03 SD 78	2.56
070-001-260-3	OR3	505	VILLAGE OF MALTA OHIO	R12 T10 S03 SD 79	0.537
070-000-930-0	OR120	197	WALTER RODGER L & BRENDA L	R12 T10 S03 SD 58 SUR	1
070-000-920-0	OR120	197	WALTER RODGER L & BRENDA L	R12 T10 S03 SD 39 SUR	0.78
070-006-970-0	OR232	5118	WARD JEFFREY WILLIAM & SARAH ELIZABETH	R12 T10 S03 SD 20	0.146
070-006-990-0	OR193	82	WARD JEFFREY WILLIAM & SARAH ELIZABETH	R12 T10 S03 SD 25	0.192
070-007-760-0	OR203	1672	WHITE BETTY M	R12 T10 S03 SD 11	4
070-007-770-0	OR203	1672	WHITE BETTY M	R12 T10 S03 SD 62	17.51
070-000-520-0	OR231	2197	WILSON JOHN R II & AMBER J	R12 T10 S03 SD 52 SUR	3.09
070-004-840-0	OR231	168	WITTENAUER GARY S & TAMMIE R	R12 T10 S03 SD 8 SUR	14.617
070-008-000-0	OR12	606	WOODWARD JOHN B & SHIRLEY	R12 T10 S03 SD 69	1.23



**Boundaries**

- Hidden
- Hydro
- Roads
- County
- Lot
- Parcel
- ROW
- Section
- Township
- Parcels



Disclaimer: The information that these maps contains is for reference purposes only. Please bring any errors to the attention of the Engineer's Office staff.  
Thank you

Source: Morgan County Engineer's Office  
Author: Marcia Wolfe  
Date: 6/17/2020